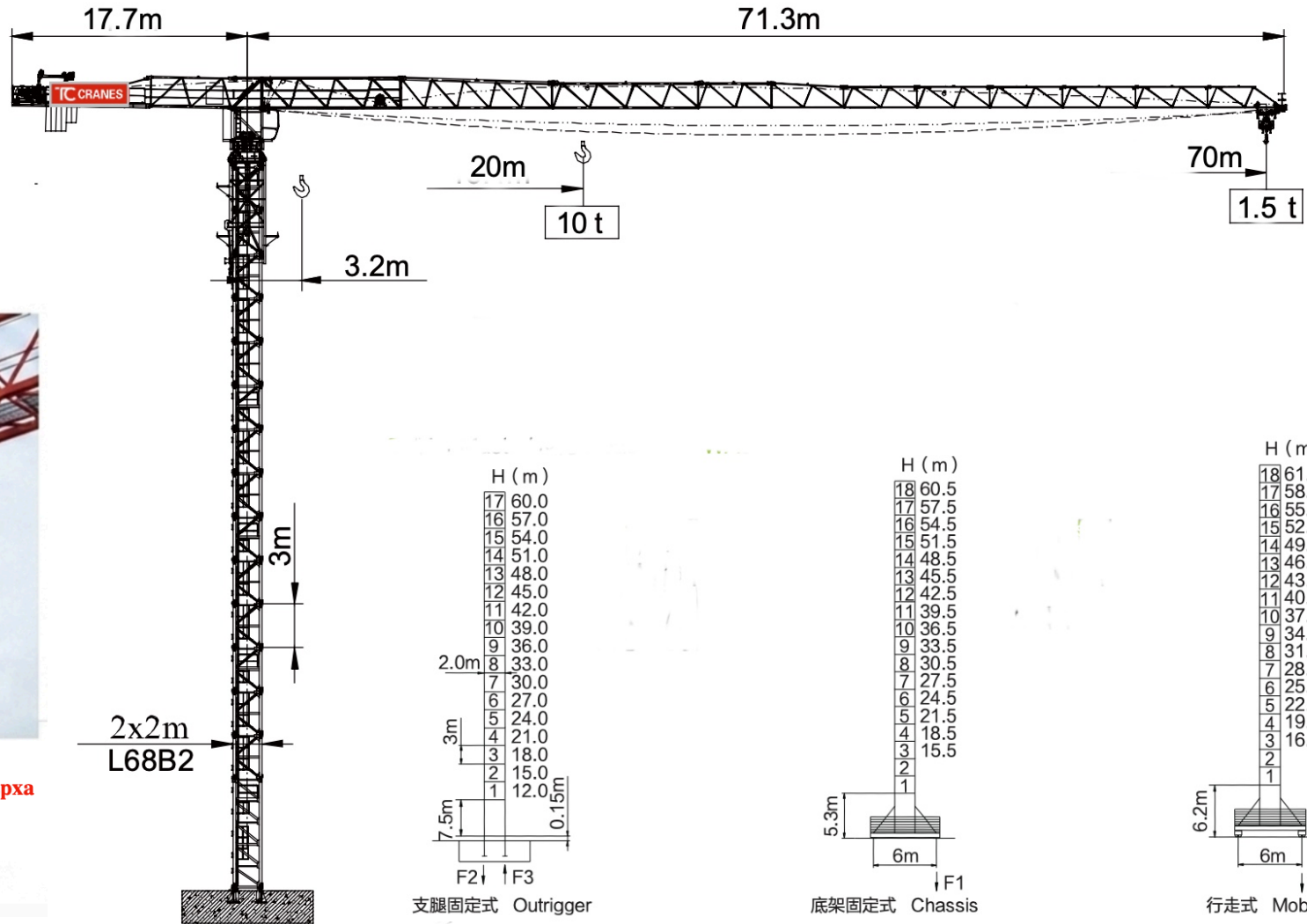


Overall shape parameter

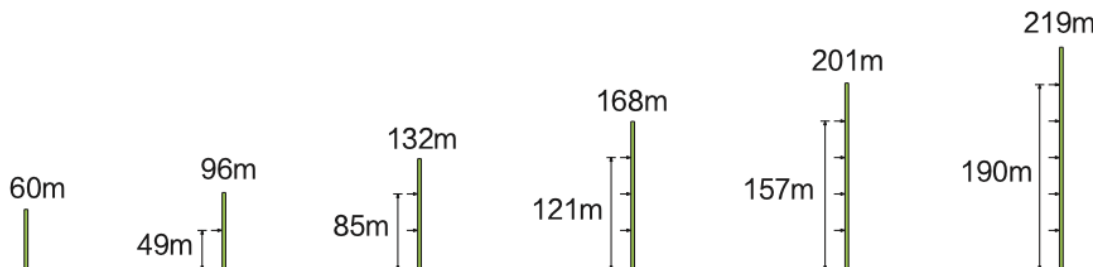


Силата на червеното.
Най-сигурният път към върха

JIB		Max Capacity m/t	20.0	22.5	25.0	27.5	30.0	32.5	35.0	37.5	40.0	42.5	45.0	47.5	50.0	52.5	55.0	57.5	60.0	62.5	65.0	67.5	70.0
70 (R=71.8)	⊔	2.5~28.2/5	5.00				4.65	4.22	3.85	3.53	3.25	3.01	2.80	2.60	2.43	2.27	2.13	2.00	1.89	1.78	1.68	1.59	1.50
	⊔⊔	2.5~15.5/10	7.43	6.46	5.69	5.07	4.56	4.12	3.76	3.44	3.16	2.92	2.70	2.51	2.34	2.18	2.04	1.91	1.79	1.69	1.59	1.49	1.41
67.5 (R=69.3)	⊔	2.5~30.7/5	5.00				4.67	4.27	3.92	3.62	3.35	3.12	2.91	2.72	2.55	2.40	2.26	2.13	2.01	1.90	1.80		
	⊔⊔	2.5~16.9/10	8.19	7.13	6.29	5.61	5.05	4.58	4.18	3.83	3.53	3.26	3.03	2.82	2.63	2.46	2.30	2.16	2.04	1.92	1.81	1.71	
65 (R=66.8)	⊔	2.5~31.8/5	5.00				4.87	4.46	4.10	3.78	3.51	3.26	3.05	2.85	2.67	2.51	2.37	2.24	2.11	2.00			
	⊔⊔	2.5~17.4/10	8.52	7.42	6.56	5.85	5.27	4.78	4.36	4.00	3.69	3.42	3.17	2.95	2.76	2.58	2.42	2.28	2.14	2.02	1.91		
62.5 (R=64.3)	⊔	2.5~33.8/5	5.00				4.80	4.41	4.08	3.79	3.53	3.29	3.09	2.90	2.73	2.57	2.43	2.30					
	⊔⊔	2.5~18.5/10	9.13	7.96	7.04	6.29	5.67	5.15	4.70	4.32	3.99	3.69	3.43	3.20	2.99	2.81	2.64	2.48	2.34	2.21			
60 (R=61.8)	⊔	2.5~34.5/5	5.00				4.92	4.53	4.18	3.88	3.62	3.38	3.17	2.98	2.80	2.65	2.50						
	⊔⊔	2.5~18.9/10	9.35	8.15	7.21	6.44	5.81	5.28	4.82	4.43	4.09	3.79	3.53	3.29	3.08	2.89	2.71	2.55	2.41				
57.5 (R=59.3)	⊔	2.5~37.0/5	5.00				4.92	4.55	4.23	3.95	3.69	3.46	3.26	3.07	2.90								
	⊔⊔	2.5~20.2/10	10.00	8.83	7.81	6.99	6.31	5.74	5.25	4.83	4.46	4.14	3.85	3.60	3.37	3.17	2.98	2.81					
55 (R=56.8)	⊔	2.5~38.2/5	5.00				4.73	4.40	4.11	3.84	3.61	3.39	3.20										
	⊔⊔	2.5~20.8/10	10.00	9.15	8.10	7.25	6.55	5.96	5.45	5.02	4.64	4.31	4.01	3.75	3.51	3.30	3.11						
52.5 (R=54.3)	⊔	2.5~40.0/5	5.00				4.66	4.35	4.07	3.82	3.60												
	⊔⊔	2.5~21.8/10	10.00	9.65	8.55	7.65	6.92	6.30	5.77	5.31	4.91	4.56	4.26	3.98	3.73	3.51							



Anchorage



机构特性 Mechanisms specification

名称 Items	机构代号 Mechanism	工作速度 / 起重量 Speed/ Hoist weight				电动机 Motor Kw
		m/min	t	m/m in	t	
提升 Hoisting	37FC20-440	0-8.5 0-57 0-80	4.0 2.7 1.5	0-4.2 0-23 0-40	8.0 8.0 8.0	530m 37
变频 Trolleying	4DCV	0-80				5.5
回转 Slewing	RCV95	0-0.7rpm				2 x 7.5
	OMD45	0-0.7rpm				-----
行走 Traveling	18TVF	0-25 m/min				4x3.4

供电参数 Power supply parameters

380/415V (±5%) 50 Hz / 60Hz		kVA
		83

