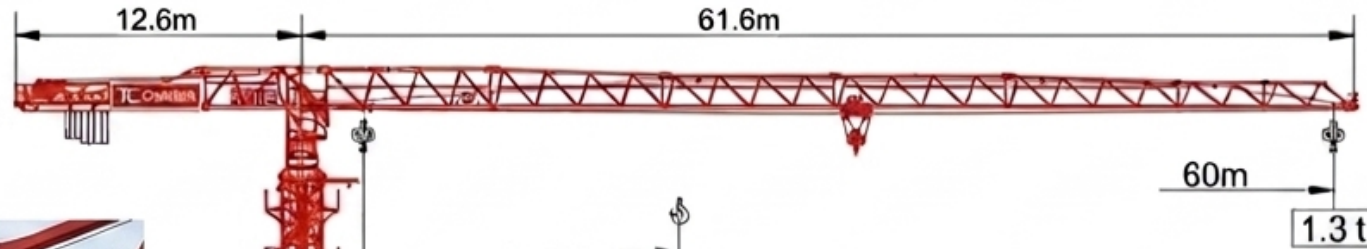
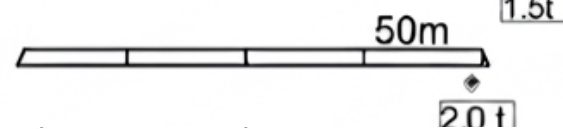


整机外形参数
Overall shape parameter



6t



2.8m

masts reactions

1.6 m

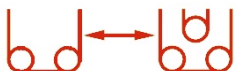
1.6x1.6m

Level	HUH (m)
16	41.1
15	38.6
14	36.1
13	33.6
12	31.1
11	28.6
10	26.1
9	23.6
8	21.1
7	18.6
6	16.1
5	13.6
4	
3	
2	
1	

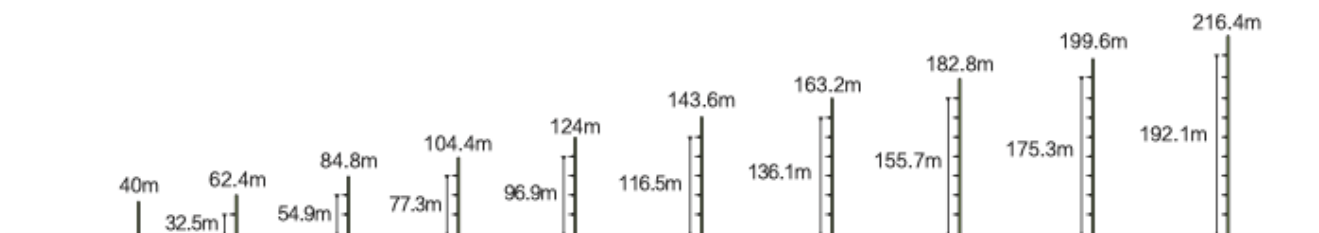
Level	HUH (m)
13	39.2
12	36.7
11	34.2
10	31.7
9	29.2
8	26.7
7	24.2
6	21.7
5	19.2
4	16.7
3	14.2
2	
1	

Level	HUH (m)
13	40.0
12	37.5
11	35.0
10	32.5
9	30.0
8	27.5
7	25.0
6	22.5
5	20.0
4	17.5
3	15.0
2	
1	

Силата на червеното
Най-сигурният път към върха



R(m)			15	17.5	20	22.5	25.0	27.5	30.0	32.5	35.0	37.5	40.0	42.5	45.0	47.5	50.0	52.5	55.0	57.5	60.0
6t	3t																				
60.0	2.5~17.8	31.7-32.2	6.00	6.00	5.24	4.56	4.02	3.58	3.22	2.97	2.70	2.48	2.28	2.11	1.95	1.81	1.69	1.58	1.48	1.38	1.30
55.0	2.5~19.6	35.0-35.5	6.00	6.00	5.87	5.12	4.52	4.04	3.63	3.29	3.00	2.81	2.59	2.40	2.23	2.07	1.94	1.81	1.70		
50.0	2.5~20.1	35.9-36.4	6.00	6.00	6.00	5.26	4.65	4.15	3.74	3.39	3.10	2.89	2.67	2.47	2.30	2.14	2.00				
45.0	2.5~20.1	35.9-36.5	6.00	6.00	6.00	5.27	4.66	4.16	3.75	3.40	3.10	2.90	2.67	2.48	2.30						
40.0	2.5~20.3	36.2-36.8	6.00	6.00	6.00	5.32	4.70	4.20	3.78	3.43	3.13	2.93	2.70								
35.0	2.5~20.4		6.00	6.00	6.00	5.34	4.72	4.22	3.80	3.45	3.15										
30.0	2.5~20.6		6.00	6.00	6.00	5.41	4.78	4.27	3.85												



机构特性Mechanisms specification

名称 Items	机构代号 Mechanism	工作速度 / 起重量 Speed/ Hoist weight				电动机 Motor Kw
		m/min	t	m/min	t	
提升 Hoisting	30FC20-440	0-8.5 0-57 0-80	4.0 2.7 1.5	0-4.2 0-23 0-40	8.0 8.0 8.0	440m 30
变幅 Trolleying	4DCV	0-100				4
回转 Slewing	RCV95	0-0.7rpm				2 x 4
	OMD45	0-0.7rpm				-----
行走 Traveling	18TVF	0.25 m/min				4x3.4

供电参数 Power supply parameters

380/415V (± 5%) 50 Hz / 60Hz		kVA
		82

